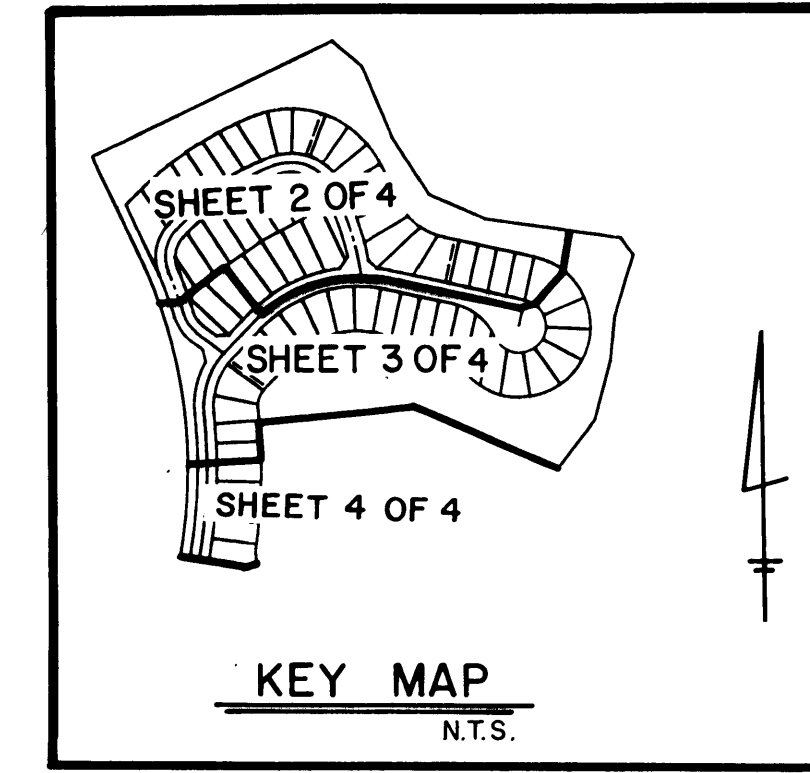
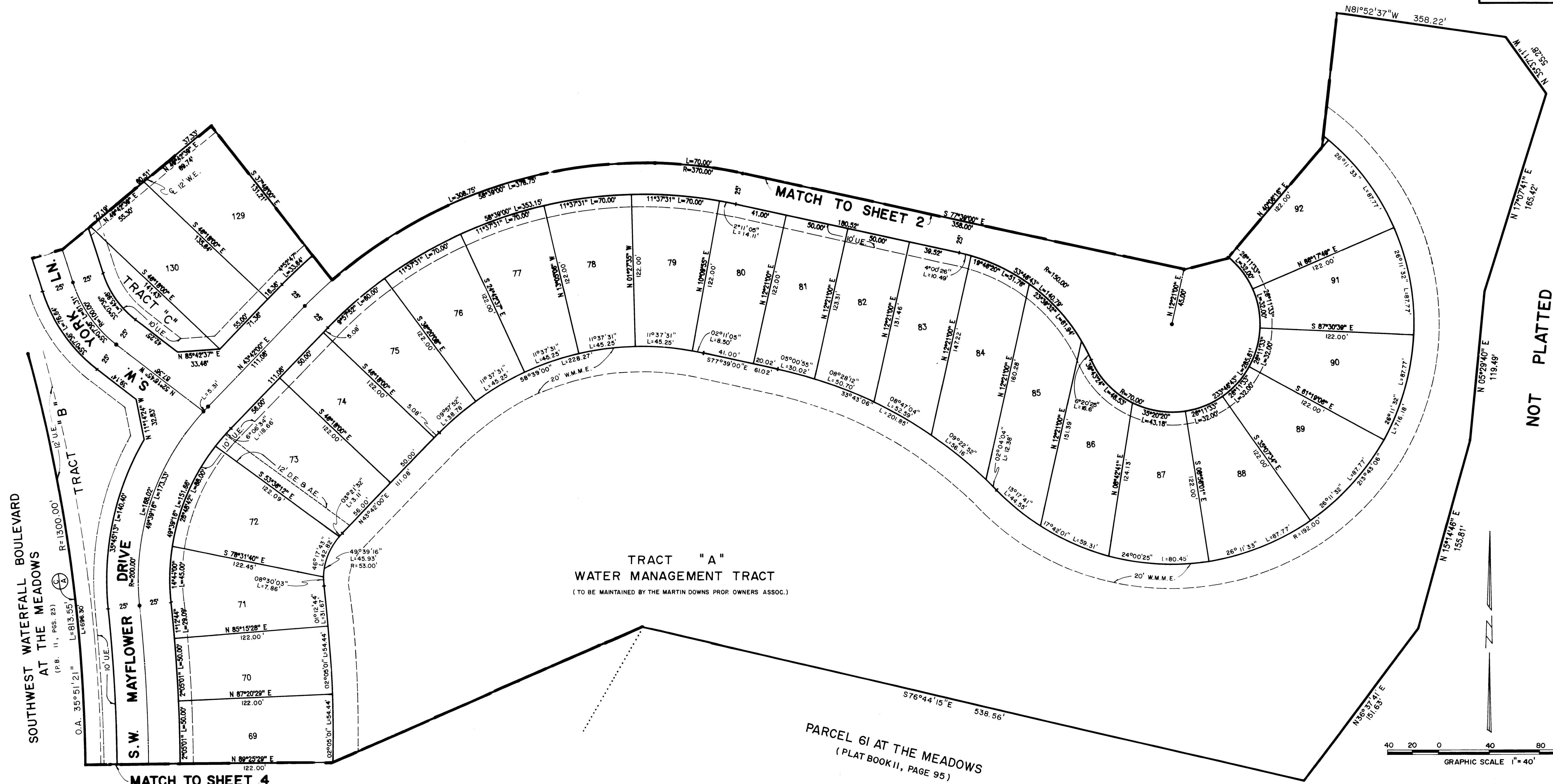


# A PLAT OF PARCEL 61-A AT THE MEADOWS

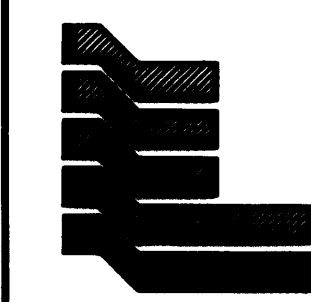
BEING PLAT NO. 59 OF MARTIN DOWNS A P.U.D. ALSO  
BEING A REPLAT OF A PORTION OF PARCEL 61 AT THE MEADOWS  
BEING PLAT NO. 49 OF MARTIN DOWNS A P.U.D. AS RECORDED  
IN P.B. II, PG. 95 PUBLIC RECORD OF MARTIN COUNTY, LYING  
IN SECTION 12, TOWNSHIP 38 SOUTH, RANGE 40 EAST, MARTIN COUNTY, FLORIDA  
SHEET 3 OF 4 1990.



I, MARSHA STILLER, CLERK OF  
THE CIRCUIT COURT OF MARTIN  
COUNTY, FLORIDA, HEREBY CERTIFY  
THAT THIS PLAT WAS FILED FOR  
RECORD IN PLAT BOOK 12,  
PAGE 57, MARTIN COUNTY,  
FLORIDA, PUBLIC RECORDS, THIS  
DAY OF \_\_\_\_\_,  
A.D. 19\_\_\_\_.  
MARSHA STILLER, CLERK OF  
CIRCUIT COURT  
MARTIN COUNTY, FLORIDA  
By: \_\_\_\_\_ DEPUTY CLERK  
FILE NO. \_\_\_\_\_



NOT PLATTED



**Landmark Surveying & Mapping Inc.**  
1850 FOREST HILL BOULEVARD  
PH. (305)433-5405 SUITE 100 W.P.B. FLORIDA

**PARCEL 61-A AT THE MEADOWS**